

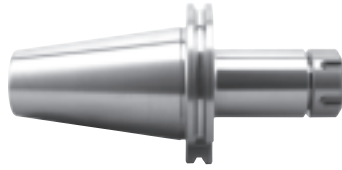


ER COLLET CHUCKS

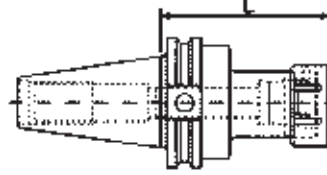
Bright-Tools - CAT-40 ER Collet Chucks

Benefits of BRIGHT-TOOLS

- Cat 40 Balanced to G2.5 - 20,000 RPM
- Taper Tolerance - AT3 or Better
- 56-58 HRC Hardness
- Balanced on Haimer Machines



PRECISION TOOLS

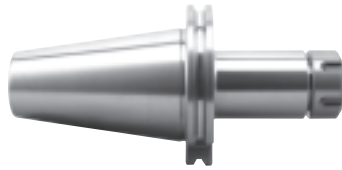


Part No.	Taper	Description	Collet Size	Gage-L	Price
BRT-01031125	CAT 40	Collet Chuck	ER11	2.5"	\$87.06
BRT-01031140	CAT 40	Collet Chuck	ER11	4"	91.01
BRT-01031160	CAT 40	Collet Chuck	ER11	6"	113.19
BRT-01031625	CAT 40	Collet Chuck	ER16	2.5"	87.06
BRT-01031640	CAT 40	Collet Chuck	ER16	4"	91.01
BRT-01031660	CAT 40	Collet Chuck	ER16	6"	113.19
BRT-01032025	CAT 40	Collet Chuck	ER20	2.5"	87.06
BRT-01032040	CAT 40	Collet Chuck	ER20	4"	91.01
BRT-01032060	CAT 40	Collet Chuck	ER20	6"	113.19
BRT-01032525	CAT 40	Collet Chuck	ER25	2.5"	87.06
BRT-01032540	CAT 40	Collet Chuck	ER25	4"	91.01
BRT-01032560	CAT 40	Collet Chuck	ER25	6"	113.19
BRT-01033230	CAT 40	Collet Chuck	ER32	3"	87.06
BRT-01033250	CAT 40	Collet Chuck	ER32	5"	102.94
BRT-01034030	CAT 40	Collet Chuck	ER40	3"	87.06
BRT-01034050	CAT 40	Collet Chuck	ER40	5"	102.94

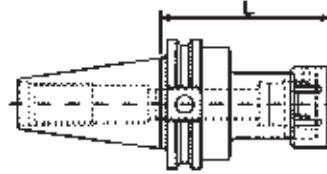
Bright-Tools - CAT-50 ER Collet Chucks

Benefits of BRIGHT-TOOLS

- Cat 50 Balanced to G6.3 - 15,000 RPM
- Taper Tolerance - AT3 or Better
- 56-58 HRC Hardness
- Balanced on Haimer Machines



PRECISION TOOLS



Part No.	Taper	Description	Collet Size	Gage-L	Price
BRT-02031640	CAT 50	Collet Chuck	ER16	4"	\$117.33
BRT-02031660	CAT 50	Collet Chuck	ER16	6"	135.38
BRT-02032025	CAT 50	Collet Chuck	ER20	2.5"	117.33
BRT-02032060	CAT 50	Collet Chuck	ER20	6"	135.38
BRT-02032525	CAT 50	Collet Chuck	ER25	2.5"	117.33
BRT-02032540	CAT 50	Collet Chuck	ER25	4"	117.33
BRT-02032560	CAT 50	Collet Chuck	ER25	6"	135.38
BRT-02032580	CAT 50	Collet Chuck	ER25	8"	170.86
BRT-02033240	CAT 50	Collet Chuck	ER32	4"	117.33
BRT-02033260	CAT 50	Collet Chuck	ER32	6"	135.38
BRT-02033280	CAT 50	Collet Chuck	ER32	8"	170.86
BRT-02034040	CAT 50	Collet Chuck	ER40	4"	117.33
BRT-02034060	CAT 50	Collet Chuck	ER40	6"	135.38
BRT-02034080	CAT 50	Collet Chuck	ER40	8"	170.86



Nuts and Wrenches



A/Hex

Part No.	Model	D (mm)	d1 (mm)	L (mm)	T	Price
BRT-10101100	ER11-A	19	17	11.3	M14X0.75	\$12.81

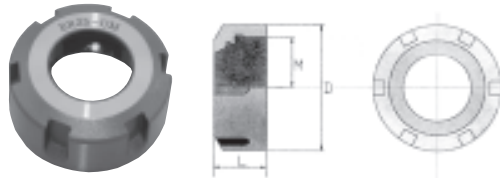


A

Part No.	B	L
BRT-10111100	17	110



Clamping Nut	Price
ER11-A	\$17.50



UM/T2

Part No.	Model	D (mm)	d1 (mm)	L (mm)	T	Price
BRT-10101600	ER16-UM	32	26	17	M22X1.5	\$12.81
BRT-10102000	ER20-UM	35	29	19	M25X1.5	15.19
BRT-10102500	ER25-UM	42	36	20	M32X1.5	16.31
BRT-10103200	ER32-UM	50	44	22.5	M40X1.5	18.69
BRT-10104000	ER40-UM	63	57	25.5	M50X1.5	21.00



UM

Part No.	B	L	Clamping Nut	Price
BRT-10111600	26	180	ER16-UM	\$18.69
BRT-10112000	30	190	ER20-UM	19.81
BRT-10112500	37	210	ER25-UM	24.50
BRT-10113200	46.5	250	ER32-UM	30.31
BRT-10114000	58	290	ER40-UM	36.19



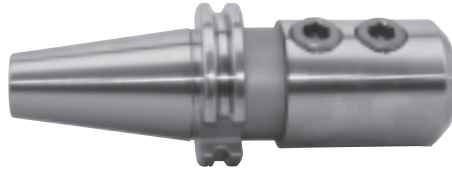


END MILL HOLDERS

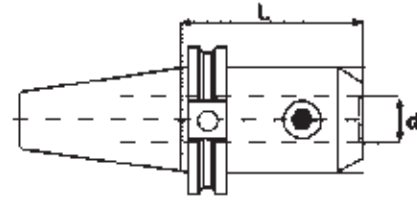
Bright-Tools - CAT-40 End Mill Holders

Benefits of BRIGHT-TOOLS

- Cat 40 Balanced to G2.5 - 20,000 RPM
- Cat 50 Balanced to G6.3 - 15,000 RPM
- Taper Tolerance - AT3 or Better
- 56-58 HRC Hardness
- Balanced on Haimer Machines



PRECISION TOOLS



Part No.	Taper	Description	Hole Dia. - D	Gage-L	Price
BRT-01010251	CAT 40	End Mill Holder	1/4"	1.38"	\$89.16
BRT-01010254	CAT 40	End Mill Holder	1/4"	4"	80.09
BRT-01010311	CAT 40	End Mill Holder	5/16"	1.38"	89.16
BRT-01010314	CAT 40	End Mill Holder	5/16"	4"	80.09
BRT-01010371	CAT 40	End Mill Holder	3/8"	1.38"	89.16
BRT-01010374	CAT 40	End Mill Holder	3/8"	4"	80.09
BRT-01010432	CAT 40	End Mill Holder	7/16"	2.5"	76.61
BRT-01010501	CAT 40	End Mill Holder	1/2"	1.75"	89.16
BRT-01010504	CAT 40	End Mill Holder	1/2"	4"	80.09
BRT-01010506	CAT 40	End Mill Holder	1/2"	6"	90.59
BRT-01010621	CAT 40	End Mill Holder	5/8"	1.75"	89.16
BRT-01010623	CAT 40	End Mill Holder	5/8"	3"	80.80
BRT-01010625	CAT 40	End Mill Holder	5/8"	5"	90.59
BRT-01010751	CAT 40	End Mill Holder	3/4"	1.75"	89.16
BRT-01010753	CAT 40	End Mill Holder	3/4"	3"	76.61
BRT-01010755	CAT 40	End Mill Holder	3/4"	5.5"	99.61
BRT-01010873	CAT 40	End Mill Holder	7/8"	3.5"	76.61
BRT-01011002	CAT 40	End Mill Holder	1"	2"	89.16
BRT-01011004	CAT 40	End Mill Holder	1"	4"	80.09
BRT-01011006	CAT 40	End Mill Holder	1"	6"	99.61
BRT-01011252	CAT 40	End Mill Holder	1-1/4"	2"	89.16
BRT-01011254	CAT 40	End Mill Holder	1-1/4"	4"	80.09
BRT-01011256	CAT 40	End Mill Holder	1-1/4"	6"	99.61
BRT-01011504	CAT 40	End Mill Holder	1-1/2"	4.5"	90.59

Bright-Tools - CAT-50 End Mill Holders

PRECISION TOOLS

Part No.	Taper	Description	Hole Dia. - D	Gage-L	Price
BRT-02010251	CAT 50	End Mill Holder	1/4"	1.38"	\$128.30
BRT-02010254	CAT 50	End Mill Holder	1/4"	4"	114.24
BRT-02010256	CAT 50	End Mill Holder	1/4"	6"	131.81
BRT-02010312	CAT 50	End Mill Holder	5/16"	2.5"	114.24
BRT-02010314	CAT 50	End Mill Holder	5/16"	4"	114.24
BRT-02010371	CAT 50	End Mill Holder	3/8"	1.38"	128.30
BRT-02010374	CAT 50	End Mill Holder	3/8"	4"	114.24
BRT-02010376	CAT 50	End Mill Holder	3/8"	6"	131.81
BRT-02010432	CAT 50	End Mill Holder	7/16"	2.5"	114.24
BRT-02010501	CAT 50	End Mill Holder	1/2"	1.75"	114.24
BRT-02010504	CAT 50	End Mill Holder	1/2"	4"	114.24
BRT-02010506	CAT 50	End Mill Holder	1/2"	6"	131.81
BRT-02010621	CAT 50	End Mill Holder	5/8"	1.75"	114.24
BRT-02010624	CAT 50	End Mill Holder	5/8"	4"	114.24
BRT-02010626	CAT 50	End Mill Holder	5/8"	6"	131.81
BRT-02010751	CAT 50	End Mill Holder	3/4"	1.75"	114.24
BRT-02010754	CAT 50	End Mill Holder	3/4"	4"	114.24
BRT-02010756	CAT 50	End Mill Holder	3/4"	6"	131.81
BRT-02018753	CAT 50	End Mill Holder	7/8"	3.75"	114.24
BRT-02011002	CAT 50	End Mill Holder	1"	2"	128.30
BRT-02011004	CAT 50	End Mill Holder	1"	4"	114.24
BRT-02011006	CAT 50	End Mill Holder	1"	6"	131.81
BRT-02011008	CAT 50	End Mill Holder	1"	8"	166.36
BRT-02011252	CAT 50	End Mill Holder	1-1/4"	2"	128.30
BRT-02011254	CAT 50	End Mill Holder	1-1/4"	4"	114.24
BRT-02011256	CAT 50	End Mill Holder	1-1/4"	6"	134.73
BRT-02011258	CAT 50	End Mill Holder	1-1/4"	8"	166.36
BRT-02011502	CAT 50	End Mill Holder	1-1/2"	2.25"	128.30
BRT-02011504	CAT 50	End Mill Holder	1-1/2"	4.5"	117.15
BRT-02011508	CAT 50	End Mill Holder	1-1/2"	8"	166.36
BRT-02012005	CAT 50	End Mill Holder	2"	5.37"	131.81

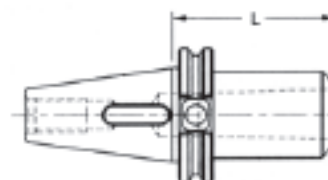
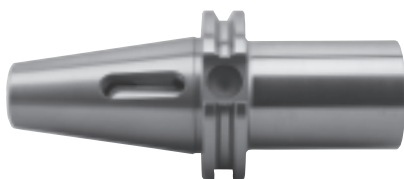
TAPER ADAPTERS



Bright-Tools - Morse Taper Adapter

Benefits of BRIGHT-TOOLS

- Cat 40 Balanced to G2.5 - 20,000 RPM
- Cat 50 Balanced to G6.3 - 15,000 RPM
- Taper Tolerance - AT3 or Better
- 56-58 HRC Hardness
- Balanced on Haimer Machines



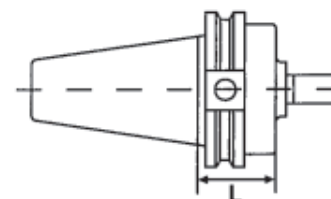
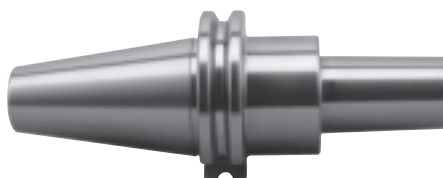
PRECISION TOOLS

Part No.	Taper	Description	Morse Taper	Gage-L	Price
BRT-01050202	CAT 40	Morse Taper Adapter	MT 2	2"	\$69.69
BRT-01050303	CAT 40	Morse Taper Adapter	MT 3	3"	69.69
BRT-01050404	CAT 40	Morse Taper Adapter	MT 4	4"	73.15
BRT-02050202	CAT 50	Morse Taper Adapter	MT 2	2"	\$114.24
BRT-02050302	CAT 50	Morse Taper Adapter	MT 3	2"	114.24
BRT-02050403	CAT 50	Morse Taper Adapter	MT 4	3"	114.24
BRT-02050504	CAT 50	Morse Taper Adapter	MT 5	4"	131.81

Bright-Tools - Jacobs Taper Adapter

Benefits of BRIGHT-TOOLS

- Cat 40 Balanced to G2.5 - 20,000 RPM
- Cat 50 Balanced to G6.3 - 15,000 RPM
- Taper Tolerance - AT3 or Better
- 56-58 HRC Hardness
- Balanced on Haimer Machines



PRECISION TOOLS

Part No.	Taper	Description	Jacobs Taper	Gage-L	Price
BRT-01040202	CAT 40	Jacobs Adapter	JT #2	2"	\$69.69
BRT-01040302	CAT 40	Jacobs Adapter	JT #3	2"	69.69
BRT-01040402	CAT 40	Jacobs Adapter	JT #4	2"	69.69
BRT-01040602	CAT 40	Jacobs Adapter	JT #6	2"	69.69
BRT-01043302	CAT 40	Jacobs Adapter	JT #33	2"	69.69
BRT-02040202	CAT 50	Jacobs Adapter	JT #2	2"	\$95.71
BRT-02040302	CAT 50	Jacobs Adapter	JT #3	2"	95.71
BRT-02040402	CAT 50	Jacobs Adapter	JT #4	2"	95.71
BRT-02040602	CAT 50	Jacobs Adapter	JT #6	2"	95.71
BRT-02043302	CAT 50	Jacobs Adapter	JT #33	2"	95.71



KITS

CAT 40 Package

- Pre-Packaged Kit gives you the basic tools to get you started.
- Kit includes - Holders, Collets, Retention Knobs, Wrenches.
- Kit Part No. - **BRT - KITCAT40.**

CAT 40 Package - BRT-KITCAT40

\$798.75

PRECISION TOOLS



Part No.	Description	Size	Gage- "L"	Quantity
BRT-01010371	End Mill Holder	3/8"	1.38"	1
BRT-01010501	End Mill Holder	1/2"	1.75"	1
BRT-01010751	End Mill Holder	3/4"	1.75"	1
BRT-01011002	End Mill Holder	1"	2"	1
BRT-01033230	Collect Chuck	ER32	3"	1
BRT-01020751	Face Mill Holder	3/4"	1.75"	1
DOR-46772	Collet Set	ER32	18 Pcs.	1
BRT-10113200	Collet Wrench	ER32	-	1
CAT 40	Retention Knobs	Advise Make & Model of Machine	-	6

CAT 50 Package

- Pre-Packaged Kit gives you the basic tools to get you started.
- Kit includes - Holders, Collets, Retention Knobs, Wrenches.
- Kit Part No. - **BRT - KITCAT50.**

CAT 50 Package - BRT-KITCAT50

\$911.25

PRECISION TOOLS



Part No.	Description	Size	Gage- "L"	Quantity
BRT-02010501	End Mill Holder	1/2"	1.75"	1
BRT-02010751	End Mill Holder	3/4"	1.75"	1
BRT-02011004	End Mill Holder	1"	4"	1
BRT-02011254	End Mill Holder	1-1/4"	4"	1
BRT-02033240	Collect Chuck	ER32	4"	1
BRT-02021001	Face Mill Holder	1"	1.75"	1
DOR-46772	Collet Set	ER32	18 Pcs.	1
BRT-10113200	Collet Wrench	ER32	-	1
CAT 50	Retention Knobs	Advise Make & Model of Machine	-	6

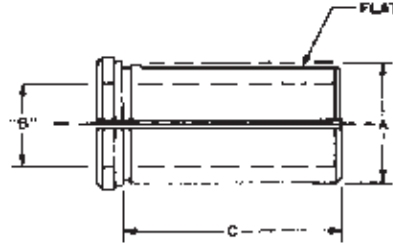


TOOLHOLDER BUSHINGS

PRECISION TOOLS

Toolholder Bushing Type B

These split Type B Bushings are manufactured for all Types and sizes of CNC Lathes and Chuckers; are Heat Treated and precision ground concentric. They are used to adapt Drills, Boring Bars, and other Shank Tools.

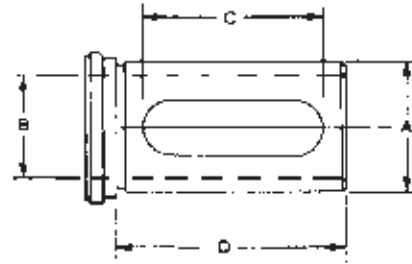


Part No.	Description	O.D. - "A"	I.D. - "B"	Length - "C"	Price
BRT-20010725	Bushing Type B	3/4"	1/4"	1-1/2"	\$46.20
BRT-20010731	Bushing Type B	3/4"	5/16"	1-1/2"	46.20
BRT-20010737	Bushing Type B	3/4"	3/8"	1-1/2"	46.20
BRT-20010750	Bushing Type B	3/4"	1/2"	1-1/2"	46.20
BRT-20011031	Bushing Type B	1"	5/16"	1-3/4"	46.20
BRT-20011037	Bushing Type B	1"	3/8"	1-3/4"	46.20
BRT-20011050	Bushing Type B	1"	1/2"	1-3/4"	46.20
BRT-20011062	Bushing Type B	1"	5/8"	1-3/4"	46.20
BRT-20011075	Bushing Type B	1"	3/4"	1-3/4"	46.20
BRT-20011237	Bushing Type B	1-1/4"	3/8"	2-1/8"	48.30
BRT-20011250	Bushing Type B	1-1/4"	1/2"	2-1/8"	48.30
BRT-20011275	Bushing Type B	1-1/4"	3/4"	2-1/8"	48.30
BRT-20011287	Bushing Type B	1-1/4"	7/8"	2-1/8"	48.30
BRT-20011291	Bushing Type B	1-1/4"	1"	2-1/8"	48.30
BRT-20011537	Bushing Type B	1-1/2"	3/8"	2-1/2"	50.41
BRT-20011550	Bushing Type B	1-1/2"	1/2"	2-1/2"	50.41
BRT-20011562	Bushing Type B	1-1/2"	5/8"	2-1/2"	50.41
BRT-20011575	Bushing Type B	1-1/2"	3/4"	2-1/2"	50.41
BRT-20011587	Bushing Type B	1-1/2"	7/8"	2-1/2"	50.41
BRT-20011591	Bushing Type B	1-1/2"	1"	2-1/2"	50.41
BRT-20011592	Bushing Type B	1-1/2"	1-1/4"	2-1/2"	50.41
BRT-20011750	Bushing Type B	1-3/4"	1/2"	3"	57.75
BRT-20011762	Bushing Type B	1-3/4"	5/8"	3"	57.75
BRT-20011775	Bushing Type B	1-3/4"	3/4"	3"	57.75
BRT-20011787	Bushing Type B	1-3/4"	7/8"	3"	57.75
BRT-20011791	Bushing Type B	1-3/4"	1"	3"	57.75
BRT-20011792	Bushing Type B	1-3/4"	1-1/4"	3"	57.75
BRT-20011793	Bushing Type B	1-3/4"	1-1/2"	3"	57.75
BRT-20012050	Bushing Type B	2"	1/2"	3-1/2"	67.20
BRT-20012062	Bushing Type B	2"	5/8"	3-1/2"	67.20
BRT-20012075	Bushing Type B	2"	3/4"	3-1/2"	67.20
BRT-20012091	Bushing Type B	2"	1"	3-1/2"	67.20
BRT-20012092	Bushing Type B	2"	1-1/4"	3-1/2"	67.20
BRT-20012094	Bushing Type B	2"	1-1/2"	3-1/2"	67.20
BRT-20012095	Bushing Type B	2"	1-3/4"	3-1/2"	67.20



Toolholder Bushing Type C

This CNC Type C Bushing is designed for use on all C/N/C turning machines. To adapt a wide variety of Boring Bars, Drills, Reamers and Shank Type tools. Precision machine hardened and ground.



PRECISION TOOLS

Part No.	Description	O.D. - "A"	I.D. - "B"	Length - "D"	Slot - "C"	Price
BRT-20020725	Bushing Type C	3/4"	1/4"	2"	1-1/12"	\$46.20
BRT-20020731	Bushing Type C	3/4"	5/16"	2"	1-1/12"	46.20
BRT-20020737	Bushing Type C	3/4"	3/8"	2"	1-1/12"	46.20
BRT-20020750	Bushing Type C	3/4"	1/2"	2"	1-1/12"	46.20
BRT-20021031	Bushing Type C	1"	5/16"	2-3/4"	2-3/8"	46.20
BRT-20021037	Bushing Type C	1"	3/8"	2-3/4"	2-3/8"	46.20
BRT-20021050	Bushing Type C	1"	1/2"	2-3/4"	2-3/8"	46.20
BRT-20021062	Bushing Type C	1"	5/8"	2-3/4"	2-3/8"	46.20
BRT-20021075	Bushing Type C	1"	3/4"	2-3/4"	2-3/8"	46.20
BRT-20021237	Bushing Type C	1-1/4"	3/8"	3-1/4"	2-3/4"	48.30
BRT-20021250	Bushing Type C	1-1/4"	1/2"	3-1/4"	2-3/4"	48.30
BRT-20021275	Bushing Type C	1-1/4"	3/4"	3-1/4"	2-3/4"	48.30
BRT-20021287	Bushing Type C	1-1/4"	7/8"	3-1/4"	2-3/4"	48.30
BRT-20021291	Bushing Type C	1-1/4"	1"	3-1/4"	2-3/4"	48.30
BRT-20021537	Bushing Type C	1-1/2"	3/8"	3-3/8"	3"	50.41
BRT-20021550	Bushing Type C	1-1/2"	1/2"	3-3/8"	3"	50.41
BRT-20021562	Bushing Type C	1-1/2"	5/8"	3-3/8"	3"	50.41
BRT-20021575	Bushing Type C	1-1/2"	3/4"	3-3/8"	3"	50.41
BRT-20021587	Bushing Type C	1-1/2"	7/8"	3-3/8"	3"	50.41
BRT-20021591	Bushing Type C	1-1/2"	1"	3-3/8"	3"	50.41
BRT-20021592	Bushing Type C	1-1/2"	1-1/4"	3-3/8"	3"	50.41
BRT-20021750	Bushing Type C	1-3/4"	1/2"	3-1/2"	3-1/8"	57.75
BRT-20021762	Bushing Type C	1-3/4"	5/8"	3-1/2"	3-1/8"	57.75
BRT-20021775	Bushing Type C	1-3/4"	3/4"	3-1/2"	3-1/8"	57.75
BRT-20021787	Bushing Type C	1-3/4"	7/8"	3-1/2"	3-1/8"	57.75
BRT-20021791	Bushing Type C	1-3/4"	1"	3-1/2"	3-1/8"	57.75
BRT-20021792	Bushing Type C	1-3/4"	1-1/4"	3-1/2"	3-1/8"	57.75
BRT-20021793	Bushing Type C	1-3/4"	1-1/2"	3-1/2"	3-1/8"	57.75
BRT-20022050	Bushing Type C	2"	1/2"	4"	3-5/8"	67.20
BRT-20022062	Bushing Type C	2"	5/8"	4"	3-5/8"	67.20
BRT-20022075	Bushing Type C	2"	3/4"	4"	3-5/8"	67.20
BRT-20022091	Bushing Type C	2"	1"	4"	3-5/8"	67.20
BRT-20022092	Bushing Type C	2"	1-1/4"	4"	3-5/8"	67.20
BRT-20022094	Bushing Type C	2"	1-1/2"	4"	3-5/8"	67.20
BRT-20022095	Bushing Type C	2"	1-3/4"	4"	3-5/8"	67.20